

# MonaPlantSystem.com

Phone: (714) 865-9206 Fax: (714) 633-3917

E-mail: [Bob@MonaPlantSystem.com](mailto:Bob@MonaPlantSystem.com)

Website: [www.MonaPlantSystem.com](http://www.MonaPlantSystem.com)

Distributed by:

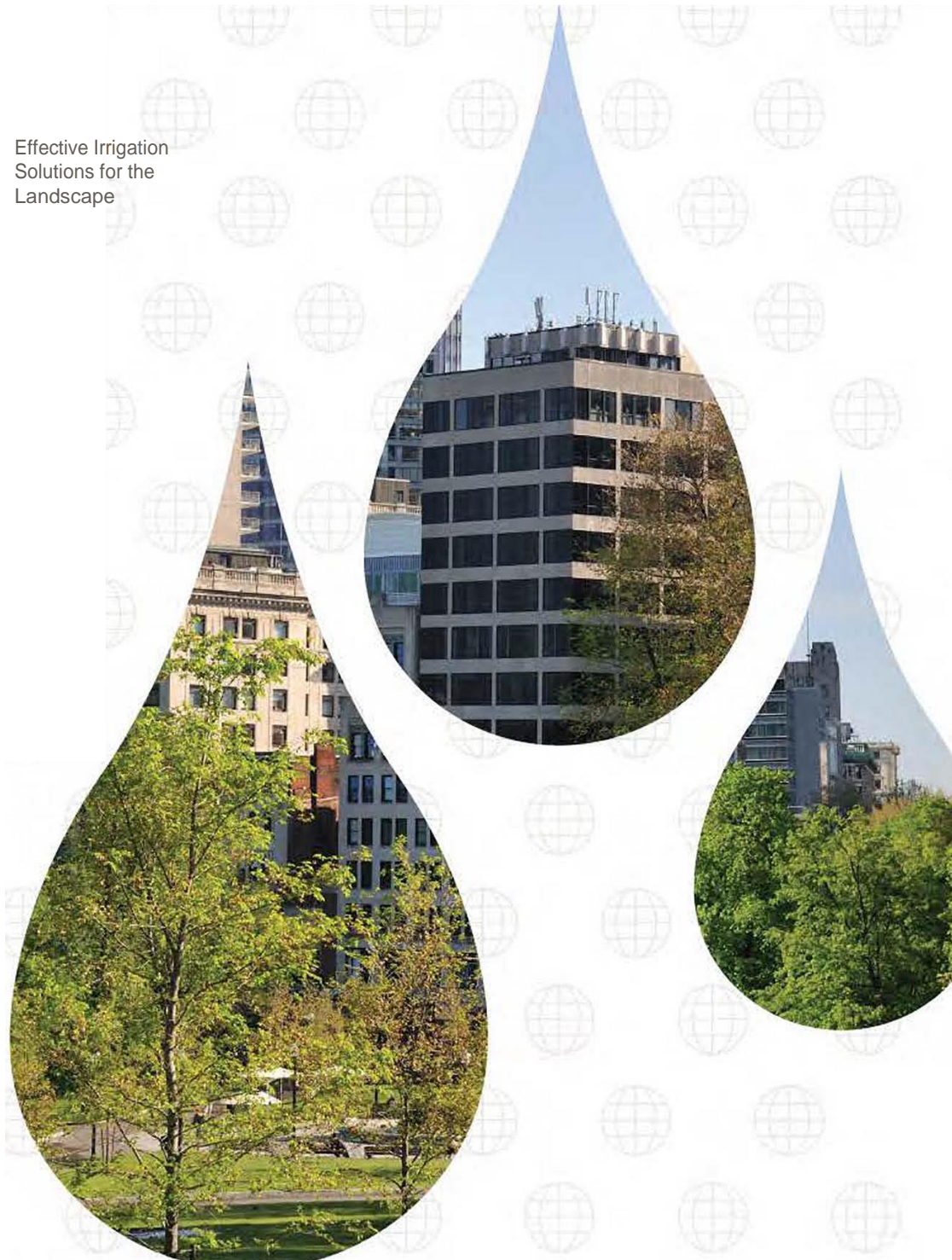
[MonaPlantSystem.Com](http://MonaPlantSystem.Com)

767 N Hariton Street

Orange, CA 92868



Effective Irrigation  
Solutions for the  
Landscape



# MonaPlantSystem.com

Mona Plant System

## Introduction

Phone: (714) 865-9206 Fax: (714) 633-3917

E-mail: [Bob@MonaPlantSystem.com](mailto:Bob@MonaPlantSystem.com)

Website: [www.MonaPlantSystem.com](http://www.MonaPlantSystem.com)

Distributed by:

[MonaPlantSystem.Com](http://MonaPlantSystem.Com)

767 N Hariton Street

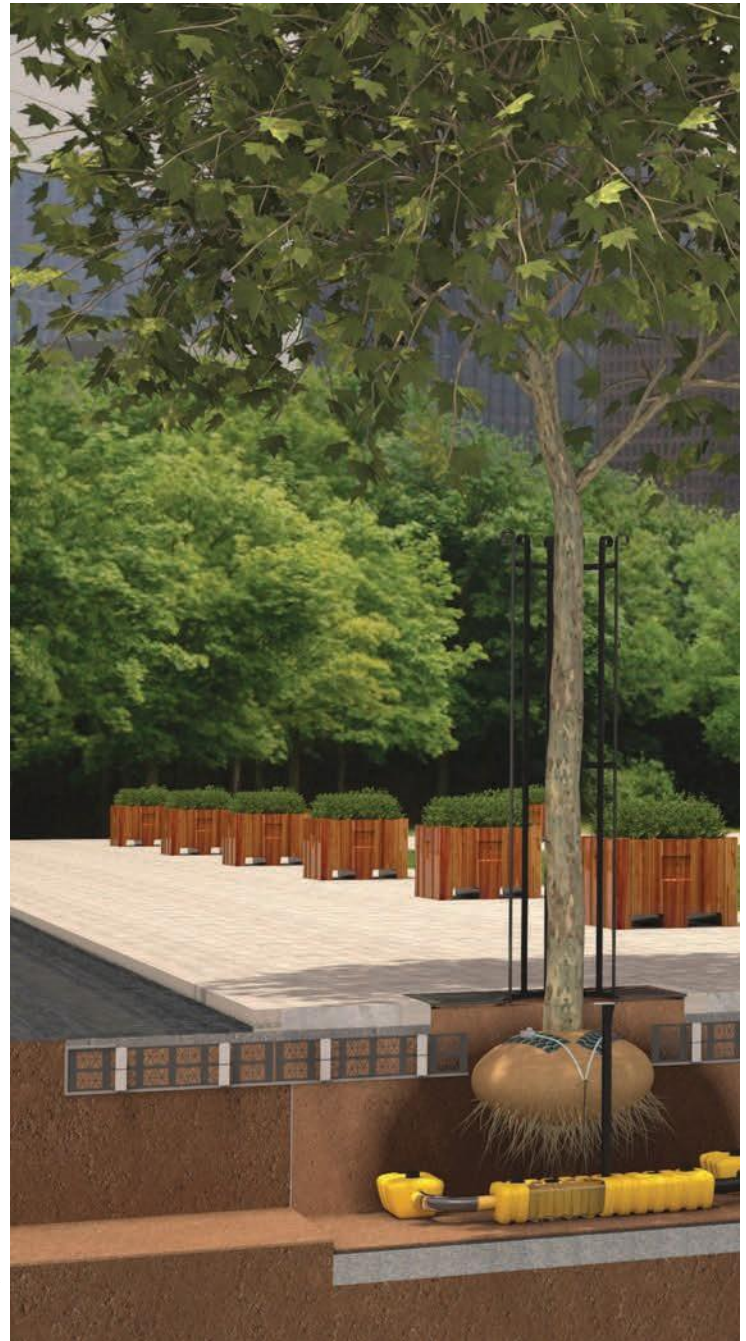
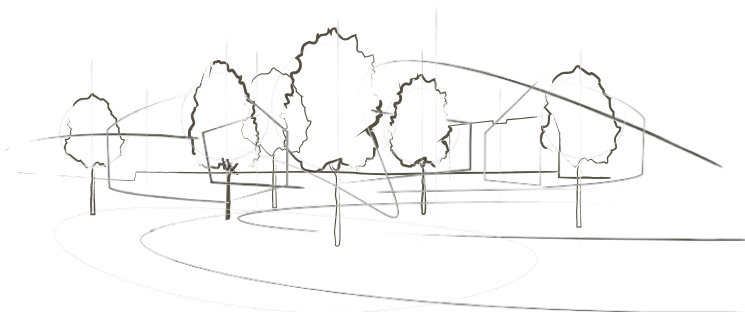
Orange, CA 92868

An advanced and well proven subterranean irrigation system suitable for interior and exterior planting applications. The Mona Plant System is versatile, cost effective and environmentally friendly. The perfect solution for any landscaping project large or small.

The Mona Plant System ensures water and nutrients are delivered in the correct quantity to the roots of plants and trees. This results in healthy root development and optimum growth.

- A subterranean system
- No mechanical, electrical or moving parts
- Simple to install
- Plant's roots absorb water from the Mona tanks as and when they require it. (Capillary action)
- Eliminates over-watering and water wastage
- Aerates soil
- Reduces watering frequency

Today, the Mona Plant System is distributed in the United States by [MonaPlantSystem.com](http://MonaPlantSystem.com) located in Orange, California. It has been specified on many projects across the USA and Canada for over 35 years.





Mona Plant System  
Component Parts  
See page 08 & 09

# MonaPlantSystem.com

Phone: (714) 865-9206 Fax: (714) 633-3917

E-mail: [Bob@MonaPlantSystem.com](mailto:Bob@MonaPlantSystem.com)

Website: [www.MonaPlantSystem.com](http://www.MonaPlantSystem.com)

Distributed by:

[MonaPlantSystem.Com](http://MonaPlantSystem.Com)

767 N Hariton Street

Orange, CA 92868

Mona Plant System

## Inspired by Nature

---



T: (714) 865-9206 E: [Bob@MonaPlantSystem.com](mailto:Bob@MonaPlantSystem.com) W: [www.MonaPlantSystem.com](http://www.MonaPlantSystem.com)

# MonaPlantSystem.com

Mona Plant System

## How it works

Phone: (714) 865-9206 Fax: (714) 633-3917

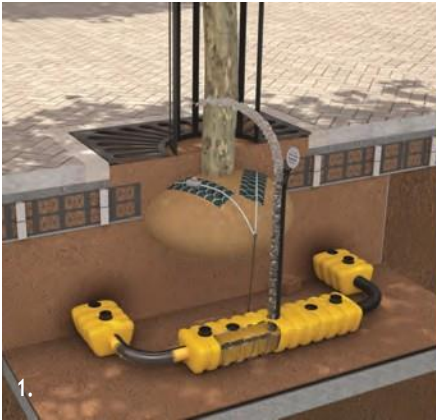
E-mail: [Bob@MonaPlantSystem.com](mailto:Bob@MonaPlantSystem.com)

Website: [www.MonaPlantSystem.com](http://www.MonaPlantSystem.com)

Distributed by:

[MonaPlantSystem.Com](http://MonaPlantSystem.Com)

767 N Hariton Street  
Orange, CA 92868



1. Mona tanks are filled with water via a filler pipe above ground
2. Tanks act as reservoirs to hold the water
3. Roots absorb the water via the process of capillary action as and when required by the plant
4. A healthy root ball is established and maintained
5. Mona tanks are filled with water via a filler pipe above ground

The Mona Plant System was developed in Sweden over 30 years ago after extensive research in to the growth and success of plants and trees in an urban environment.

Watch the system online at [www.MonaPlantSystem.com](http://www.MonaPlantSystem.com)

Naturally a plant takes on essential water and nutrients from the soil. transporting water through its roots. It does this through the process of capillary action, which occurs when the roots absorbing the liquid are stronger than the force of gravity. The water is then pulled through the soil, direct to the plant's roots absorbing nutrients from the soil on the way. Each yellow tank in the Mona Plant Systems acts as a water reservoir,

storing water underground to provide essential water and nutrients as and when required. The yellow reservoirs contain internal capillary legs that can irrigate the roots of plants sitting 6 inches above the reservoir and within a 16" diameter. The Mona Plant System provides a more natural pattern of feeding for the plant resulting in stronger healthier blooms.



# MonaPlantSystem.com

Mona Plant System Links  
Component Parts  
[See page 8](#)

Phone: (714) 865-9206 Fax: (714) 633-3917  
E-mail: [Bob@MonaPlantSystem.com](mailto:Bob@MonaPlantSystem.com)  
Website: [www.MonaPlantSystem.com](http://www.MonaPlantSystem.com)

Distributed by:

MonaPlantSystem.Com  
767 N Hariton Street  
Orange, CA 92868

## Mona Plant System Links



Probably the most versatile of all the Mona Plant Systems, the links can be incorporated into a variety of projects and landscape designs. Each yellow tank is connected via a flexible connecting tube allowing for any configuration of link system to be built into the specification.

- Ideal for interior and exterior landscaping
- Flexible hose connects the tanks for any configuration
- For use in curved and unusual shaped beds
- Gradients are handled with ease
- Perfect for stair cases and roof gardens
- Ideal for shallow planting

### Applications

1. Urban Environments
2. Slopes
3. Stair cases
4. Large Planters
5. Roof Gardens
6. Flower Beds
7. Roundabouts

Phone: (714) 865-9206 Fax: (714) 633-3917  
E-mail: Bob@MonaPlantSystem.com  
Website: www.MonaPlantSystem.com

Distributed by:

MonaPlantSystem.Com  
767 N Hariton Street  
Orange, CA 92868

Mona

## Plant System Ring



Mona Plant System Rings have been developed specifically after requests from specifiers and contractors wishing to effectively and efficiently irrigate a tree root ball or a planter. It is the most efficient method of ensuring quick establishment and a health start for trees and plants.

Mona Plant System Rings have been installed in many projects across the USA and Canada. Particularly suitable for interior landscape projects with large planter installations. Ensures quick establishment of plants and healthy root development, the system also provides a more robust solution to the watering of newly planted trees. Mona Plant System Reservoirs surround the root ball to provide a continuous source of water.

- For use in hard landscaped areas with rootball trees
- Install in large decorative planters for consistent watering
- Ideal for deep planting
- Suits interior or exterior landscaping
- Particularly suitable for the establishment of large trees

Watch the  
system online  
[www.MonaPlantSystem.com](http://www.MonaPlantSystem.com)

The system forms a ring around the root ball to ensure optimal growth. Ideal for the installation of root ball trees in hardscaped areas.



# MonaPlantSystem.com

How it works...

[See page 04](#)

Mona

## Plantsava

Phone: (714) 865-9206 Fax: (714) 633-3917

E-mail: [Bob@MonaPlantSystem.com](mailto:Bob@MonaPlantSystem.com)

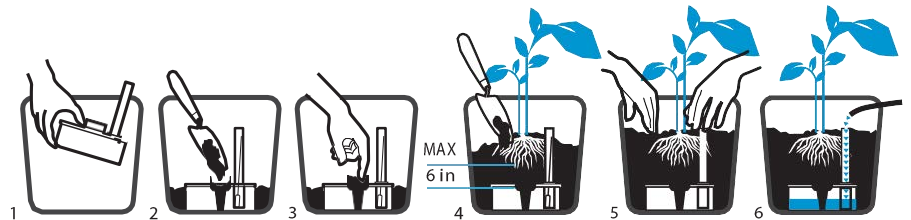
Website: [www.MonaPlantSystem.com](http://www.MonaPlantSystem.com)

Distributed by:

[MonaPlantSystem.Com](http://MonaPlantSystem.Com)

767 N Hariton Street

Orange, CA 92868



Simple and effective, the Mona Plantsava System is a reliable and natural method of irrigation for plants. Simply install the Mona Plantsava reservoir into the base of a planter or plant pot and leave it to let the plant feed itself naturally.



By using the plants natural capillary action and allowing the plants to feed and water themselves you gain bigger, stronger and longer lasting plants. Perfect for all types of planters, both indoor & outdoor, flower beds, window boxes and hanging baskets. An environmentally friendly product: 100% water efficient and made from recycled material in the UK.

There are nine sizes of Plantsava Tanks available. Each tank can be simply installed at the bottom of the planter where it will act as a reservoir and feed the plant as and when required. The plant will only take on the water it requires and in optimum conditions will require refilling once every six weeks.

- Interior and Exterior landscaping applications
- Installed in commercial projects such as hotels, casinos, retail spaces, and apartments.
- Available in a variety of sizes to fit all containers and pots.
- Can be planted at different depths to suit the plants roots
- Reservoirs range from 1 Quart to 6-1/2 gallons

# Plant System Links

Mona Plant System Links	Dimensions (Inches) L x W x H	WaterHolding Volume (G)
Link 3	25" x 5" x 2.5"	3 quarts
Link 7	21.5" x 6" x 4"	6 quarts
Link 24	35.5" x 7.75" x 6"	6.25 gallons
Link 77	26.75" x 6" x 4"	2.25 gallons
Flexible Connecting Pipes	35.5" (L)	
O-Ring	2.25" (Dia)	
End Stop	2.25" (Dia)	
Filler Pipes	3" – 6.5" (H)	



Link 3



Link 7



Link 24



Link 77

## Installation

1. Measure the area to be irrigated by the Mona Plant System Links
2. Dig down to a depth that allows 59 inches of growing media to sit above each tank and below the plant's roots
3. Lay out the tanks and connect end to end with the flexible pipes and 'O' rings
4. Place an end stop on the final tank in the formation
5. Upright filler pipes should be mounted at the start of the links or a maximum interval of every fifth connected link
6. Back-fill with growing media and plants as per specification
7. Fill with water until the float within the filler pipe rises to the fill level

Watch the system online  
[www.MonaPlantSystem.com](http://www.MonaPlantSystem.com)

Mona

# Plant System Rings

	Internal Dia (inches)	External Dia (inches)	Water Volume (G)
Ring 24	71	86.5"	25.5 gallons
Ring 77	65"	75"	7.5 gallons

## Installation

1. Measure the dimensions of the root ball or planter and select the correct size Mona Ring. For bespoke sizes, please contact the Mona Plant System technical team
2. Cover with growing media, ensuring there is a 59 inch depth between roots/rootball and the Mona Plant system Ring
3. Ensure the upright filler pipe stands proud of the nursery line/planter
4. Back-fill with growing media and plants as per specification
5. Fill with water until the float within the filler pipe rises to the fill level



MPS Ring 24



MPS Ring 77

T: (714) 865-9206 E: [Bob@MonaPlantSystem](mailto:Bob@MonaPlantSystem) W: [www.MonaPlantSystem.com](http://www.MonaPlantSystem.com)



## Plantsava Component Parts

	Filler pipe length (inches)	Dimensions (inches) L x W x H	Water Holding Volume (G)	Suitable for Planter Size (G)
MPS Tank 3	13"	24.75" L x 5" W x 2.5" H	3 quarts	2 gal to 8 gal
MPS Tank 4	18"	9.5" W x 4" H	1 gallon	4 gal to 10 gal
MPS Tank 6	23.25"	9.5" W x 6" H	1.5 gallons	5.25 gal to 16 gal
MPS Tank 7	23.25"	21.5" L x 6" W x 4" H	2 gallons	5.25 gal to 16 gal
MPS Tank 10	23.25"	15.5" W x 4" H	2.5 gallons	8 gal to 26.5 gal
MPS Tank 24	23.25"	35.5" L x 8" W x 6" H	6.25 gallons	13.5 gal to 250 gal
MPS Tank 25	23.25"	16.5" L x 16.5" W x 8.25" H	6.5 gallons	20 gal to 66 gal

### Plantsava Installation

1. The Plantsava system comprises of a reservoir tank, filler pipe, air cap, float and capillary leg.
2. Insert the capillary leg into the central hole of the reservoir tank.
3. Place the float inside the filler pipe.
4. Insert the filler pipe into the secondary hole within the reservoir tank.
5. Fill the capillary leg(s) with a small amount of growing media.
6. Insert the assembled Plantsava a into the planter, ensuring the top of the filler pipe is level with the top of the planter.
7. Fill with growing media and plant your choice of plants ensure the depth between the plants roots and top of the reservoir is no more than 59 inches



MPS Tank 4



MPS Tank 6



MPS Tank 10



MPS Tank 25



MPS Tank 3



MPS Tank 7



MPS Tank 24